

StageTek™ STAGING SYSTEM

FAST, EASY,
INTUITIVE SETUP

MORE STRENGTH
AND STABILITY

MAXIMUM
FLEXIBILITY

IMPROVED
STORAGE AND
TRANSPORT

ENHANCED
SAFETY AND
HANDLING COMFORT

DURABLE
AND
REPAIRABLE



The newest innovation from the most trusted name in staging.

www.wengercorp.com/StageTek



Wenger®
Your Performance Partner



Everything about StageTek™ is an advancement. The refined, smart design is the result of extensive research, engineering and technical advancements in materials and manufacturing. Our staging system is lighter, stronger, easier to handle and faster to set up. When it comes to stretching your investment across multiple needs like seated risers and performance stages, StageTek sets a new standard. For unlimited flexibility, an extra set of legs stored inside your deck is all you will need – that's why we made the legs strong, simple and inexpensive. Compare Wenger's StageTek Staging to any other option and see for yourself why your next stage will be StageTek.



Plug-n-play leg connection is simple and fast. No tools. No folding frames or pins to align. As much as 20% faster and 15% lighter compared to alternative systems.

FAST, EASY, INTUITIVE SETUP

Round legs fit easily into corner pockets and become rock-solid with a single turn of a knob. The operation is completely intuitive. Anyone will know immediately how to setup StageTek without struggling with heavy folding understructures, or connections that require fussy alignment.



Uniform Load = 125 lbs. to 200 lbs. per square-foot

Side Load = 15% Side Load

Point Load = 1,200 lbs per square-inch

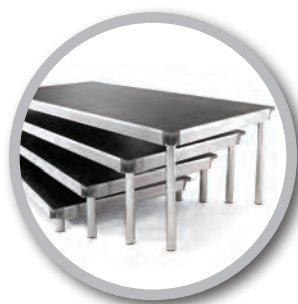
MORE STRENGTH & STABILITY

Our strongest stage deck ever has improved load ratings for the three most important load measurements. Compared to similar products, StageTek is the only system that exceeds performance expectations for uniform load, side load and point load.



ENHANCED SAFETY & HANDLING COMFORT

StageTek's decks are at least 15% lighter than competitor systems and easier to grip. This means far fewer injuries to your crew. StageTek allows for an ergonomic grip around the entire perimeter of the deck frame and is sized and contoured for maximum comfort.



Tiered Audience Seating
Runways
Corporate Events

Speaking Platforms
Drum Platform
Stage Extensions
Theatrical Sets

MAXIMUM FLEXIBILITY

Flexibility between configurations and heights is all about the legs and that's why we made them simple, strong, easy to use and inexpensive.



Individual Platforms



Flat Stage



Multilevel Stage

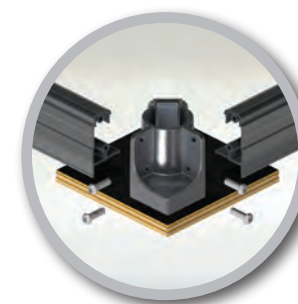


Seated Riser



IMPROVED STORAGE & MOBILITY

Our rugged cart moves it all. Six decks and multiple sets of legs all on one easy moving cart. In fact, StageTek stores in 50% less space than some other competing products. Underneath a StageTek setup you have a wide open space unencumbered by frames and braces. Opening up as much as 70% storage space under your decks.



DURABLE AND REPAIRABLE

The lack of any folding connections in our design eliminates the source of loose parts, noisy rattles and failures. Components can be easily replaced to keep your decks fresh and new looking. With a 5-year warranty, simply the best peace-of-mind that your investment is covered.



STANDARD GUARD RAILS AND OPTIONS FOR INFILL PANELS

Guardrails are 42" (107cm) high with a black powder paint finish and comply with IBC requirements for loading, featuring two uprights and two cross bars. An optional infill panel can be added that complies with the IBC 4" (10cm) sphere code. Guardrails clamp to the stage without the need for tools and function as a chair stop.



Universal Move and Store Cart – For Decks and Guardrails

NO TOOLS NEEDED



STAIRWAYS

DUAL-HEIGHT STAIRWAY
Available in 2-, 3- or 4-step units include handrails and safety treads.

ARTICULATING STAIRWAY
Variable-height stair units include removable handrails and safety treads. Available in 3-, 4-, 6- and 8-step models.



Removable Chair Stops



Semi-Permanent Chair Stops

DRAPERY AND CLOSURE PANELS
Drapery is available in heights to match the staging elevation and in a wide variety of colors. Drapery is Flame Retardant woven polyester. Solid closures are ideal for seated riser systems and connects to the rail without tools.

A BROAD RANGE OF SURFACE OPTIONS



PLUG-N-PLAY LEGS AND CENTER LEG OPTION



Fixed Height, Adjustable Feet and Telescoping Legs

CLAMPS, CONNECTORS AND BRACES

Optional Retention Clips mount under the deck to provide leg storage and variety of metal leg to leg, leg to deck, overlap and anchor brackets are available. Stabilizing braces are recommended for heights 40" (111.7cm) and above. Optional deck-to-deck cam locks are built into the deck frame. Cams can be locked or opened via a small tool access hole on top of the platform. Center leg needed for heavy-duty applications.



Velcro Leg Strap, Standard



Leg-to-Frame Connectors



Leg-to-Leg Connectors



4-Leg Connectors



Stage Anchor



Leg Retention Clips (set of 4)

WENGER CORPORATION
555 Park Drive, PO Box 448
Owatonna, MN 55060-0448
Phone 800.4WENGER (493-6437)
Fax 507.455.4258
Parts & Service 800.887.7145

WENGER CORPORATION
CANADA OFFICE
Phone 800.268.0148

WORLDWIDE
Phone 1.507.455.4100
Fax 1.507.774.8576

WEB SITE
www.wengercorp.com

© 2012 Wenger Corporation
USA/12-12/500/W/LT0360A

Wenger®
Your Performance Partner