

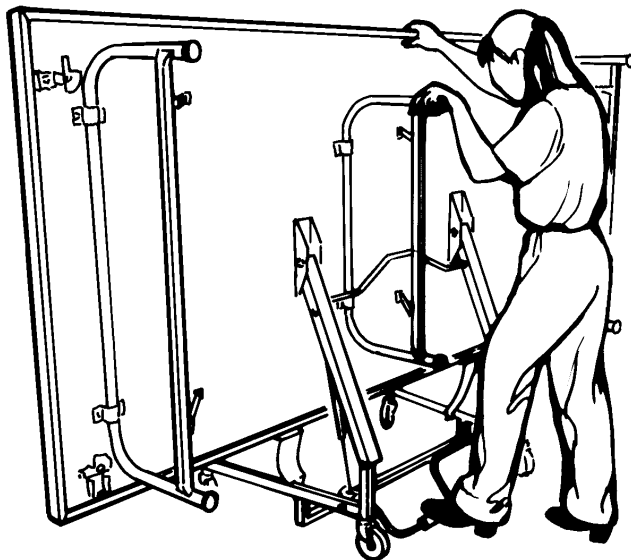
Stagehand® Platforms

- Decks are available in 4' x 8' (122 x 244 cm) sizes in the following heights:
16" (41 cm) fixed height, 24" (61 cm) fixed height, 16"/24" (41 cm/61 cm) dual height, and 24"/32" (61 cm/81 cm) dual height.
- Each deck is equipped with pneumatic springs to assist in setup and takedown, allowing one-person ease of use.
- Decks are constructed of solid core 3/4" (1.9 cm) plywood. Top surfaces available are:
black slip resistant, tempered hardboard, or grey carpet.
- Legs are one-piece 16 gauge 1 1/4" (3 cm) steel tubing with a reinforcing cross brace.
Locking angle-braces allow for easy set-up and sure stability. Legs have an electrostatically applied black epoxy paint finish.
- Frame and edging are fabricated from 16 gauge steel with a grey baked-on powder painted finish.
- Unit-to-unit frame clamps have a cam-action for easy positive locking to the frame of the adjacent unit.
One clamp per side of each stage unit, provides two points of connection when units are locked together.
- Units nest for compact storage. The first stagehand unit needs 27" (69 cm) and each additional unit only adds 12" (30 cm).
When stored, units are 61 1/2" (156 cm) high and 96" (244 cm) long.
- Five-year warranty.

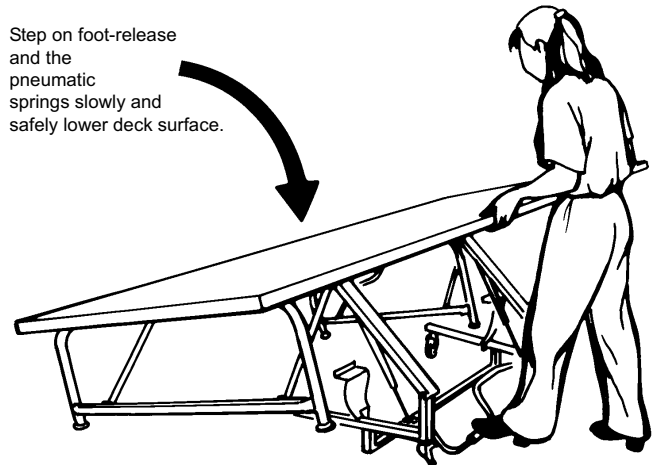
Accessories Include:

- Two- or three-step stairways include attached handrails for safety and non-slip step treads.
Steps measure 39" (99 cm) wide by 11" (28 cm) deep. Black finish.
- Guardrails comply with most building code requirements for loading.
Guardrails are 42" (107cm) high and come with either two crossbars or an infill panel that comply with the 4" (10 cm) sphere requirements of some building codes.
- Drapery closures and backdrops are available to give stage a finished look.
Stage and backdrop drapery available in a wide variety of colors. Drapery is 100% fire retardant polyester woven fabric.

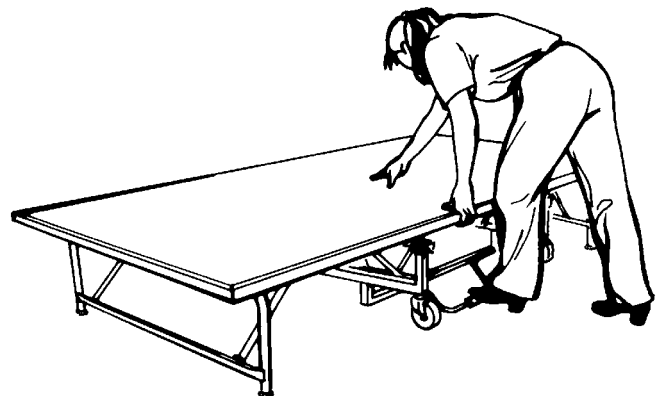
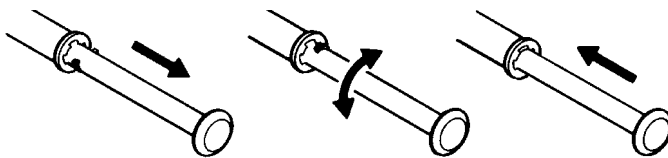
Straight Forward, Simple Operation



Step on foot-release and the pneumatic springs slowly and safely lower deck surface.



Dual Height Leg Adjustment



WENGER CORPORATION
555 Park Drive, PO Box 448
Owatonna, MN 55060-0448
Phone 800.4WENGER
Fax 507.455.4258
Customer Service 800.887.7145

CANADA
(Dufferin Liberty Center)
219 Dufferin, Suite 117C
Toronto, Ontario M6K 3J1
Phone 800.268.0148
Fax 416.754.3996

EUROPE
Tel +31 26 376 0500
wenger-europe.com

**BEIJING REPRESENTATIVE
OFFICE OF WENGER**
Tel 0086-10-84972502
Fax 0086-10-84972575

WORLDWIDE
Phone 507.455.4100
Fax 507.444.0685

WEB SITE
wengercorp.com